

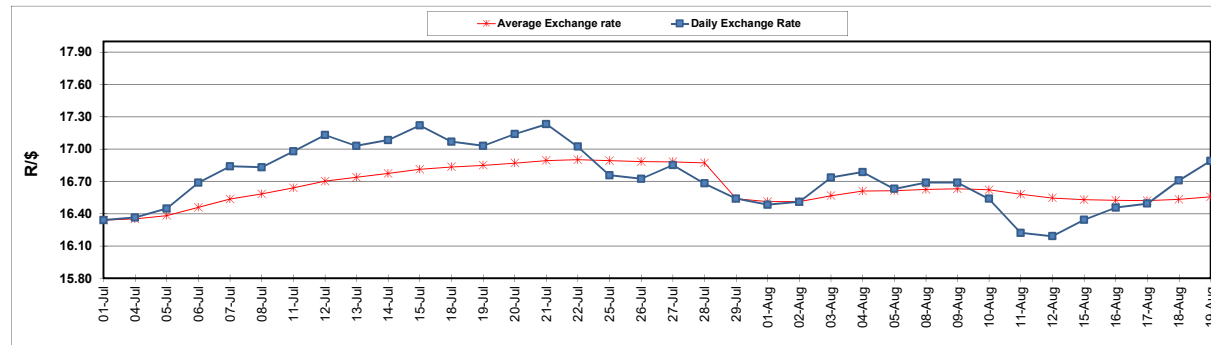
	PETROL 95 ULP	PETROL 93 ULP & LRP	DIESEL 0.05%	DIESEL 0.005%	ILL. PAR.
GAUTENG PUMP PRICE (SA c/l) AS FROM 03/08/2022	2,542.000	2,499.000	-	-	-
WHOLESALE PRICE (SA c/l) AS FROM 03/08/2022	-	-	2,452.440	2,461.840	1,842.288
SINGLE NATIONAL MAXIMUM RETAIL PRICE	-	-	-	-	2,431.000
BASIC FUEL PRICE - 19/08/2022 (SA c/l)	1,318.076	1,287.629	1,604.090	1,628.588	1,604.653
PRESS RELEASE CONTRIBUTION TO BFP 03/08/2022 - 19/08/2022 (SA c/l)	1,482.410	1,439.410	1,600.630	1,610.030	1,624.128
UNIT OVER/(UNDER) RECOVERY - 19/08/2022 (SA c/l)	164.334	151.781	(3.460)	(18.558)	19.475
AVERAGE BASIC FUEL PRICE 29/07/2022 - 19/08/2022	1,276.843	1,249.375	1,447.072	1,465.246	1,489.066
AVERAGE UNIT OVER/(UNDER) RECOVERY 29/07/2022 - 19/08/2022	244.380	228.848	184.121	175.909	162.062

ANALYSIS MOVEMENT OF AVERAGE OVER/(UNDER) RECOVERY

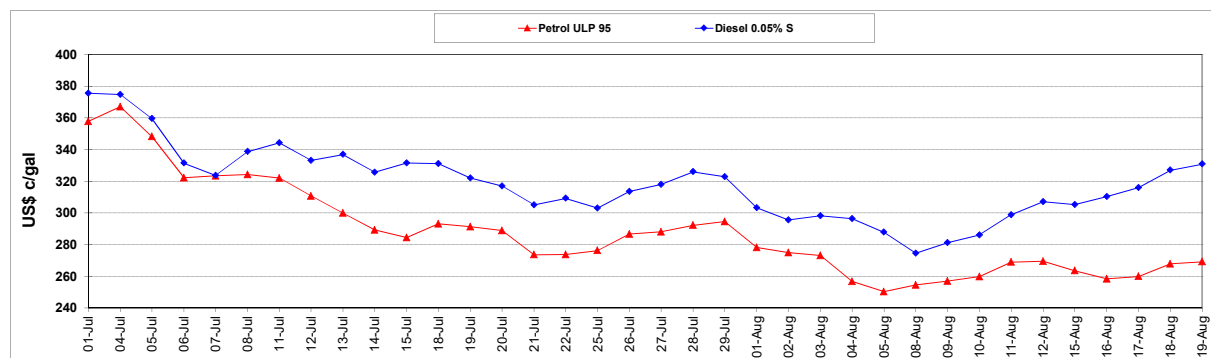
	PETROL 95	PETROL 93	DIESEL 0.05%	DIESEL 0.005%	ILL. PAR.
- MOVEMENT IN INTERNATIONAL PRODUCT PRICES	220.009	205.001	156.501	147.942	133.640
- MOVEMENT IN EXCHANGE RATE	24.371	23.847	27.620	27.967	28.422
AVERAGE UNIT OVER/(UNDER) RECOVERY 29/07/2022 - 19/08/2022	244.380	228.848	184.121	175.909	162.062

R/\$ EXCHANGE RATE - (R/\$16.8900 - 19/08/2022)

EXCHANGE RATE USED IN BASIC FUEL PRICE



INTERNATIONAL PRODUCT PRICES OF BASKET USED IN BASIC FUEL PRICE



BASIC FUEL PRICE IN SA CENTS PER LITRE

